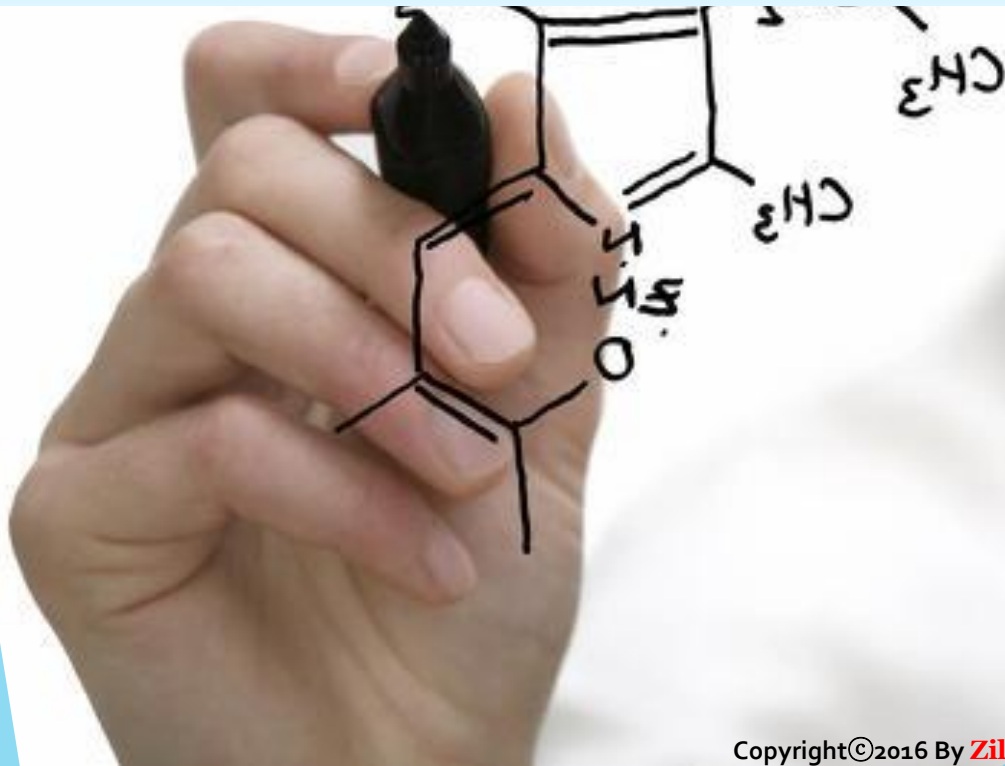


BYUCK GANG MACHINERY



Philosophy

Customer satisfaction

Sincerity

Challenge

Basics

Domestically producing
New development

World's best technology in cosmetics field.

Zilri



Contents

1. Company Intro
2. Organization
3. Core value
4. Products
5. Facility
6. Certificate
7. Experience

1. Company Intro

Company Name :
Buck Gang Machinery

Establish : Sep 24, 2012



Business Scope :
Cosmetics, Food machine.
Engineering & manufacture

Location : 141, Gwaerangbotong-gil,
Jeongnam-myeon, Hwaseong-si,
Gyeonggi-do, Korea



2. Organization

President

Sales

Domestic Sales

Engineering

Overseas Sales
Zilri

Production & Quality

Production

Installation,
commissioning

Maintenance

Administration

Purchasing

Accounting



Zilri

3. Core value

Homo mixer & Dissolver

Cosmetics manufacturing.
Maximization of designing.

- Design technic based on Solid works
 - 3D modeling & mapping
- Cosmetics manufacture equipment
 - Liquid AGI. MIXER
 - AGI-PAD MIXER
 - Upgrade facility & Capacity
- Dissolver(Wax tank)
 - Disper mixer
 - Agitator

Storage Tank & Facility work

Equipment installation.
Expansion work of facilities.

- Storage tank
 - Square tank & circle storage.
 - Portable storage.
- Piping work for facilities
 - Raw materials
 - Steam/ water
- Platform & Structurer working.

System

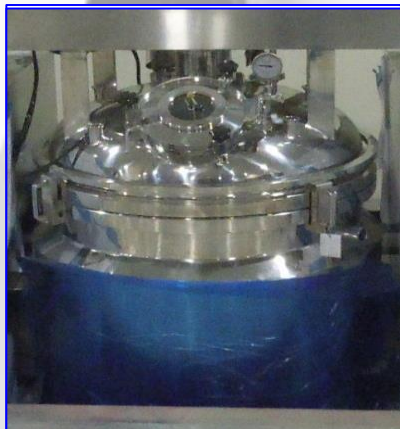
Mechanical, tool designing.
System buildup/developing.

- Heating/ auxiliary tank production.
 - Distributor & auxiliary component.
- Multistage pump cart and products.
- Manufacturing component of Evacuated chamber
- Working cart and support rack.



4. Products

Mixer (150 / 200L)



Dissolver (800L)



Dispermixer (500L)



Storage (800L)



4-1. Products

Electric Cooking Pot

Everything can be cooked and boiled by **electricity**

Revolution



- *Stainless / 3ply
- *Timer
- *Temperature controlling
- *Free from smell of gas

At
School
Restaurant
Cafeteria
Hotel

Model No.	Size	Capacity
BKZ150L	1300 x 1200 x 1200	150L/300P
BKZ250L	1400 x 1300 x 1250	250L/500P
BKZ350L	1500 x 1400 x 1300	350L/700P

Voltage : 380V, 3 phase

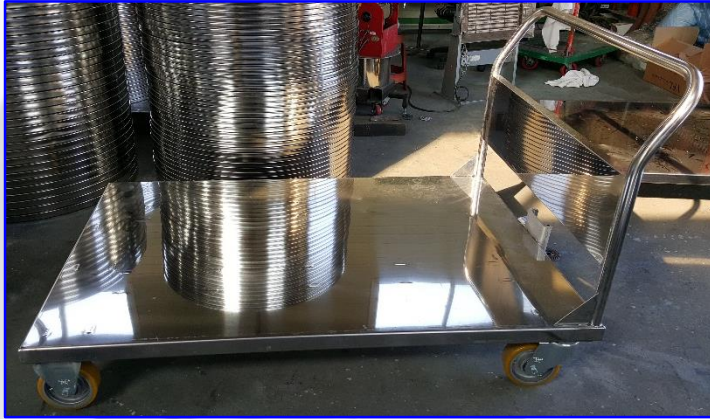
Rotary-type

PATENTED



4-2. Products

Materials cart



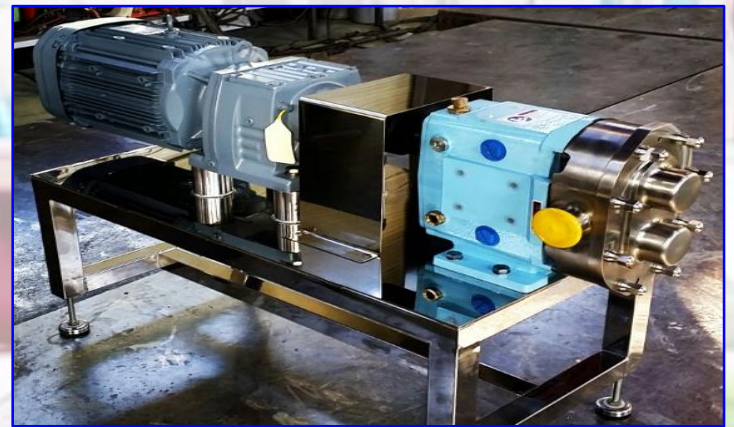
Multistage pump-cart



Working cart



In-line pump base



Zilri

4-4. Products

Platform / piping work



Ladder structure



Dust collector



System



4-5. Products

Storage closet



Storage cart



Structure support




5. Facility

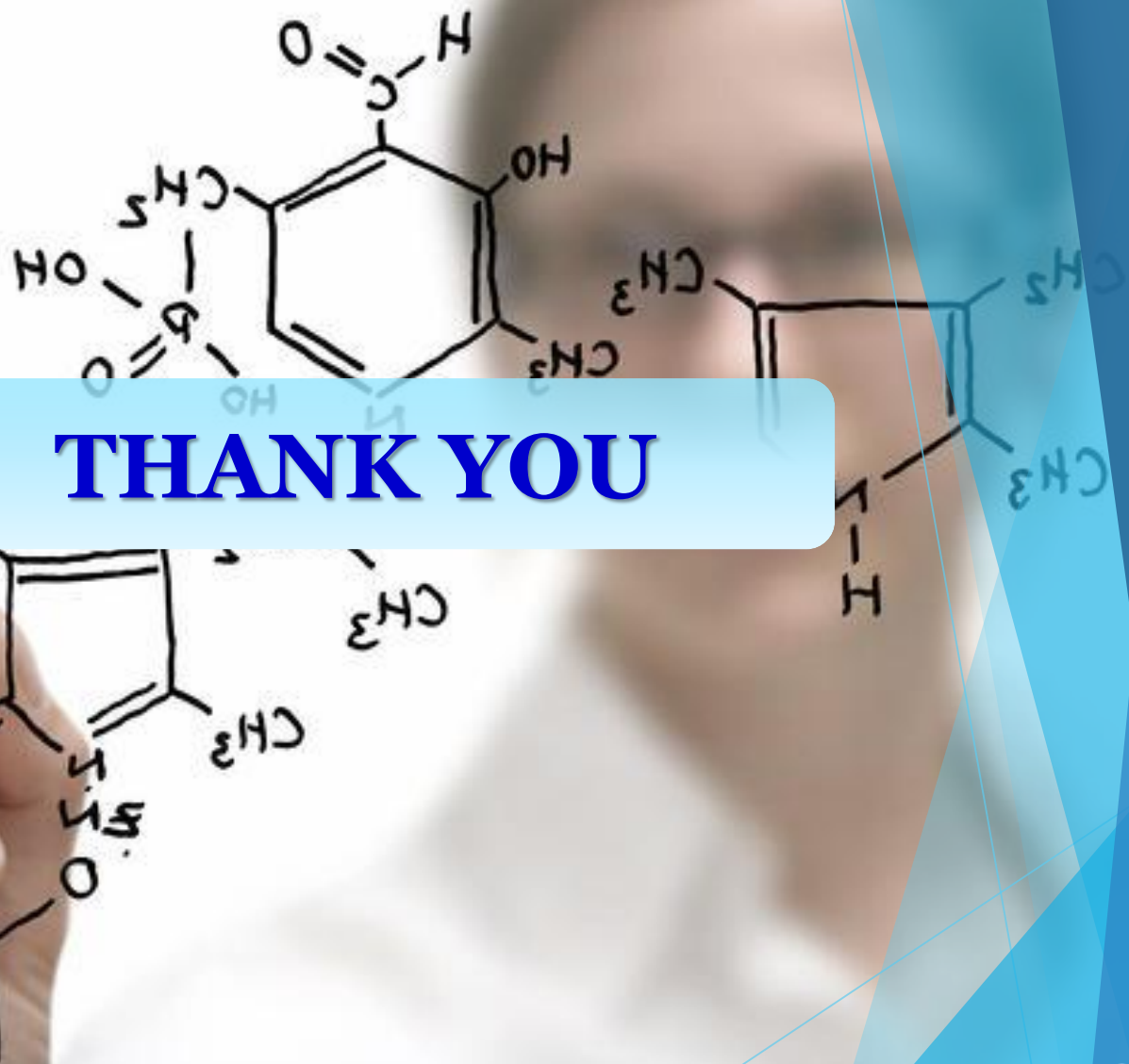
Item	Machine	Spec	Q'ty
Heavy Equipment	Over Head Crane [⊕]	3Ton [⊕]	1 [⊕]
	Air Compressor [⊕]	20Hp [⊕]	1 [⊕]
		5Hp [⊕]	2 [⊕]
	Truck [⊕]	1Ton [⊕]	1 [⊕]
Processing	Lathe Machine [⊕]	1000_ x 2000L [⊕]	1 [⊕]
	Milling Machine [⊕]	600W x 2250L [⊕]	1 [⊕]
	Electric Drilling Machine [⊕]	32mm_ [⊕]	1 [⊕]
		20mmø [⊕]	2 [⊕]
Bench Drilling Machine [⊕]	20ø [⊕]	1 [⊕]	
Welding	Band Sawing Machine [⊕]	W300 x 150H [⊕]	1 [⊕]
	Tig Welding Machine [⊕]	500A [⊕]	2 [⊕]
		350A [⊕]	2 [⊕]
	Are Welding Machine [⊕]	350A [⊕]	2 [⊕]
	CO2 Welding Machine [⊕]	500A [⊕]	1 [⊕]
	Gouging Machine [⊕]	500A [⊕]	1 [⊕]
Plasma Cutting Machine [⊕]	15T [⊕]	1 [⊕]	
Tool	Lift Clamp [⊕]	3Ton/2Ton [⊕]	2 / 3 [⊕]
	Disc Grinder [⊕]	8" / 4" [⊕]	3 / 8 [⊕]
	Bench Grinder [⊕]	12" [⊕]	2 [⊕]
	Hydraulic Jack [⊕]	10Ton [⊕]	2 [⊕]
	Chain Block [⊕]	5T / 3T / 1T [⊕]	1 / 1 / 2 [⊕]
	Impact Wrench [⊕]	18~33mm [⊕]	2 [⊕]
Measuring	Vernier Calipers [⊕]	600mm [⊕]	1 [⊕]
	Vernier Calipers [⊕]	150~300mm [⊕]	2 [⊕]
	Dial Gauge [⊕]	1/100 x 10mm [⊕]	4 [⊕]
	Micro Meter (Out, Inside) [⊕]	0~75mm [⊕]	4 [⊕]
	Cylinder Gauge [⊕]	6~100mm [⊕]	2 [⊕]
	Ultrasonic thickness gauge [⊕]	1/100 0~225mm [⊕]	1 [⊕]
	Welding gauge [⊕]	0~50mm [⊕]	1 [⊕]
	Sound level meter [⊕]	1/10 0~120dB [⊕]	1 [⊕]
Surface roughness meter [⊕]	0~1000 um [⊕]	1 [⊕]	



7. Experience

Customer	Description	Items
	Cosmetics facilities	Mixer, Platform & Piping work, MRO, others
SEC, Hynix	Chamber	Evacuated chamber
Accord	Pressure piping	Heating tank, Auxiliary tank, Distributor.
Nahoo ENG	Custom-built(pump)	Storage tank, Multistage pump, In-line pump.
Others	Machinery system	System developing





THANK YOU

